

Steinhatchee Falls to Spurgeon Cheek House Paddle

Description: Launch from Steinhatchee Falls and enjoy a leisurely 6.7 mile paddle downstream on the tea-colored waters of the Steinhatchee River. Be careful of rocks when river levels are low. The upper stretch of the river is a shady, moss-draped tunnel that widens as it approaches the Gulf. Take out is at the ramp at the Spurgeon Cheek House and is a newly-developed property owned by Dixie County that will be available to the public for rental.

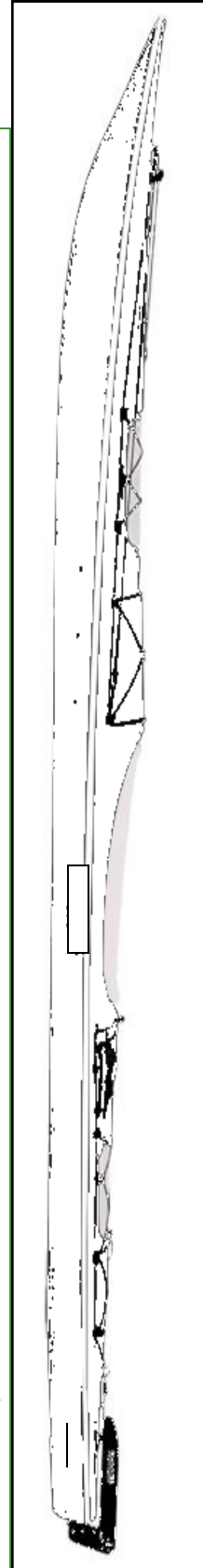
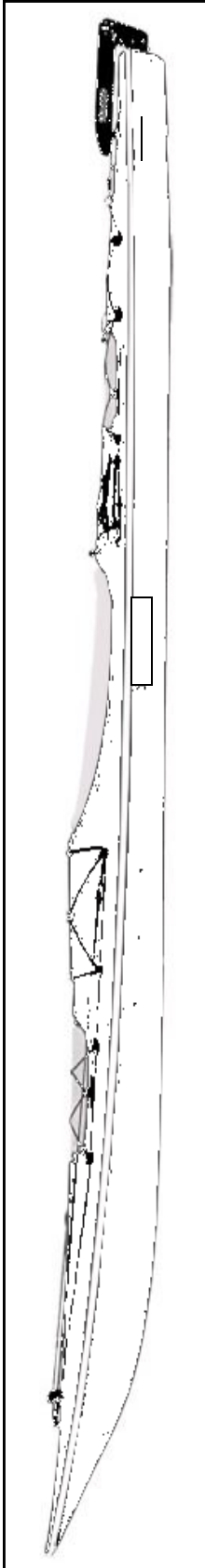
Distance/Time: 6.7 Miles/ 2 Hours

Skill Level: Novice/Intermediate

Indigenous Wildlife: Eagles, ospreys, various shorebirds and waterfowl, mullet, redfish, spotted sea trout, raccoons, otters, and blue crabs.

Launch Site: Steinhatchee Falls - Take CR 51 north-east out of Steinhatchee, go approximately 7.3 miles from the Steinhatchee River bridge and turn right on a lime rock road. Go to the end, and take another right and continue to the Park at the falls.

NOTE: Great care has been taken to ensure this guide's accuracy, but weather, tides, and water conditions can change rapidly and create hazardous conditions. Routes may change due to weather considerations. Users should consult NOAA Charts for navigation. Paddlers should have all proper safety equipment and check conditions before departure. All participants are required to wear PFDs while on water based events.



House Paddle

.